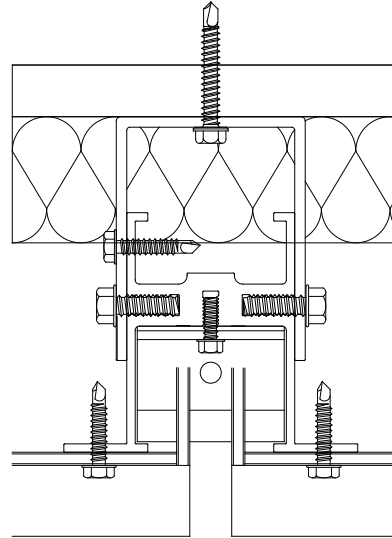
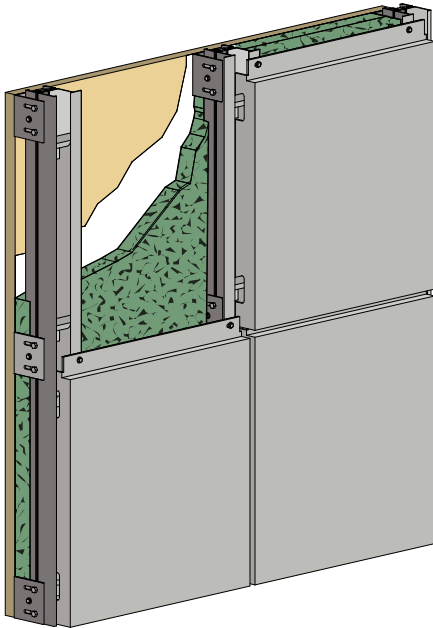


# SERIES 70 DRAINED & BACK VENTILATED RAINSCREEN



**METAL  
DESIGN  
SYSTEMS**

DESIGNED FOR  
A PERFECT FIT.



**THE SERIES 70** is a hook and pin style system with no caulk or silicone and virtually maintenance free. This panel system features a continuous vertical channel with adjustable panel support pins. The panel returns are notched to hook over the support pins. This completed system is very clean and attractive.

## SERIES 70 System Features

System	Drained and Back Ventilated Rainscreen
Joint Type/Size	Open Joint - No Caulk
Progressive System	Non-sequential
Underlayment	Air and Water Barrier Recommended
Sheathing Over Studs	5/8" Plywood Preferred
Curved Surfaces	Moderate-Difficult
Independently Tested	Pending ASTM E283, E331, E330, & AMMA 501, 509
Maintenance Free	Yes
Allow for Thermal Expansion	Yes
Price	Moderate
Weather Sealed System	No
Ease of Installation	Easy

# SERIES 70 DRAINED & BACK VENTILATED RAINSCREEN

**Face Material:**

- Alpolic
- Reynobond
- Aluminum Plate
- Stainless Steel Plate

**Thickness:**

- 3MM (.118") Special Order
- 4MM (.157") Standard
- 6MM (.236") Special Order
- .080 - .125" Aluminum Plate
- 20GA - 14GA Stainless Plate

**System Depth:**

2" minimum, 2 1/4" design

**Performance Testing:**

- ASTM E 283 - Static Air Infiltration
- ASTM E 331 - Static Water Infiltration
- AAMA 501 - Dynamic Water Infiltration
- ASTM E 330 - Structural Design Loads (40psf)

**Joint Width:**

1/2" Standard

**Recommended Panel Module Sizes:**

*ACM - Any Combination of Width & Length*

Width	Length
58"	192"
46"	142"
26"	94"
20"	68"
16"	61"

Aluminum Stainless Plate - Please call

**Panel Extrusions:**

- Aluminum Alloy: 6063-T6
- Panel Perimeter Extrusion: Continuous
- Wall Clips: 4" long 36" O.C.

**Panel Tolerance:**

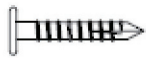
- Width: 0.08"
- Length: 0.08"
- Thickness: 0.04"
- Square: 0.2"
- Bow: Max. 0.57% of length and/or width

**Maximum Panel Size:**

58" x 192"

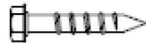
## SERIES 70 Recommended Fasteners

Dyna-Coat Torx  
T-17 12-11 x 1-1/4"



For attaching extrusions to wood substrate when a low profile head is required. 1" penetration into wood required.

#12 Wood Screw



For attaching extrusions or attachment clips to wood surfaces. Must be long enough to penetrate 1" into wood.

Dril-Flex #12 or equa



For attaching extrusions to aluminum or steel surfaces. Must be long enough to penetrate with at least 3 threads visible from back side of attachment.

1/4" Tapcon



Use for attachment of clips and extrusion to masonry surfaces. Minimum 2" from any edge to avoid structural spalling.



**METAL  
DESIGN  
SYSTEMS**

DESIGNED FOR  
A PERFECT FIT.

4150 C Street SW | P.O. Box 1165 | Cedar Rapids, IA | 52406-1165

319-362-7454 | Toll Free 866-442-6803 | Fax 319-396-2935

**METALDESIGNSYSTEMS.COM**